



# FEED THE FUTURE

The U.S. Government's Global Hunger & Food Security Initiative



## Feed the Future Innovation Lab for Fish Collaborative Opportunities for Minority-Serving Institutions

April 16, 2024 | 11:00 AM to 12:30 PM CST

*Photo: Pierre Failler*



**MISSISSIPPI STATE UNIVERSITY™**  
GLOBAL CENTER FOR AQUATIC  
HEALTH AND FOOD SECURITY



# FEED THE FUTURE

The U.S. Government's Global Hunger & Food Security Initiative

## WELCOME FROM USAID

**Dr. Tyrell Kahan**

Agreement Officer's Representative

United States Agency for International  
Development (USAID)



**USAID**  
FROM THE AMERICAN PEOPLE



**MISSISSIPPI STATE UNIVERSITY™**  
GLOBAL CENTER FOR AQUATIC  
HEALTH AND FOOD SECURITY



# FEED THE FUTURE

The U.S. Government's Global Hunger & Food Security Initiative

## WEBINAR PURPOSE

1. Improve MSI familiarity with the Fish Innovation Lab
2. Provide information on working with USAID
3. Promote collaborative opportunities for MSIs
4. Articulate the RFA process, timeline, and eligibility criteria



**MISSISSIPPI STATE UNIVERSITY™**  
GLOBAL CENTER FOR AQUATIC  
HEALTH AND FOOD SECURITY



# FEED THE FUTURE

The U.S. Government's Global Hunger & Food Security Initiative

## ABOUT FEED THE FUTURE

- U.S. Government's global hunger and food security initiative.
- Focus on smallholder farmers, particularly women
- Supports partner countries in developing agriculture sectors to spur economic growth and trade that increase incomes and reduce hunger, poverty, and undernutrition

For more information, visit [www.feedthefuture.gov](http://www.feedthefuture.gov).



**MISSISSIPPI STATE UNIVERSITY™**  
GLOBAL CENTER FOR AQUATIC  
HEALTH AND FOOD SECURITY



# FEED THE FUTURE

The U.S. Government's Global Hunger & Food Security Initiative

## FEED THE FUTURE INNOVATION LABS

- Draw on the expertise of top U.S. universities and partner country research institutions to tackle some of the world's greatest challenges in agriculture and food security
- Led by U.S. universities and central to advancing novel solutions that support goals to reduce global hunger, poverty, and undernutrition
- Use cutting-edge science to research and develop effective technologies and innovations for scaling implementers to address current and future challenges posed by a changing climate and the need to feed a growing global population with safe and nutritious food
- Provide short- and long-term training to support the sustainability of these efforts while training the next generation of scientists

For more information, visit [www.feedthefuture.gov/feed-the-future-innovation-labs](http://www.feedthefuture.gov/feed-the-future-innovation-labs).



**MISSISSIPPI STATE UNIVERSITY™**  
GLOBAL CENTER FOR AQUATIC  
HEALTH AND FOOD SECURITY



## NUTRITIONAL VALUE OF AQUATIC FOODS

### Minerals

**Fe Iron**  
essential for brain development in children and increases maternal survival rates.

**I Iodine**  
essential for brain development in fetus and young children and helps prevent stillbirth.

**Zn Zinc**  
crucial for childhood survival, reduces stunting in children and fights diarrhea.

### Essential fatty acids

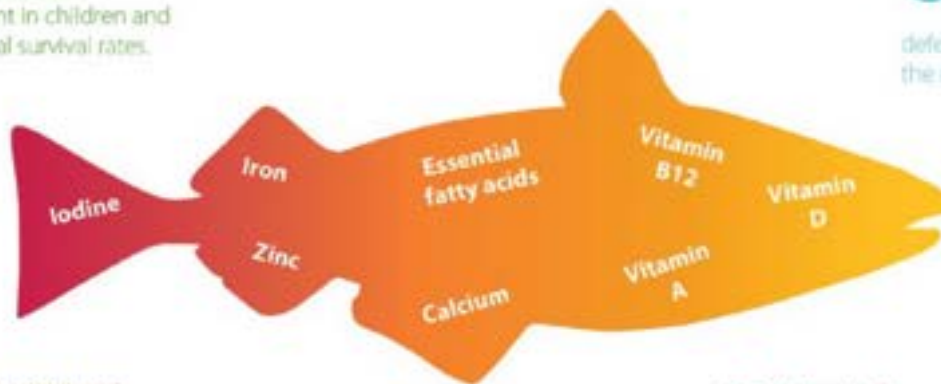
help prevent preeclampsia, preterm delivery, low birth weight, and support cognitive development and better vision in children.

### Vitamins

**B12 Vitamin B12**  
essential for a healthy pregnancy; helps prevent brain and spinal cord birth defects, and supports healthy maintenance of the nervous system and brain in children.

**D Vitamin D**  
essential for the development of strong, healthy bones, teeth and muscles in children and helps prevent preeclampsia, preterm delivery and low birth weight.

**A Vitamin A**  
essential for childhood survival, prevents blindness, helps fight infections and promotes healthy growth.



**Ca Calcium**  
helps prevent preeclampsia and preterm delivery, and is essential for strong bones and teeth.

[https://www.unnutrition.org/wp-content/uploads/FINAL-UN-Nutrition-Aquatic-foods-Paper\\_EN\\_.pdf](https://www.unnutrition.org/wp-content/uploads/FINAL-UN-Nutrition-Aquatic-foods-Paper_EN_.pdf)







## IMPACT PATHWAYS

### Climate-Smart Aquatic System Innovations

- Aquaculture technology improvement, including integrated agriculture-aquaculture systems and carbon-neutral production
- Sustainable fisheries management

### Nutrition and Food Systems

- Integrated interventions to improve nutrition
- Aquatic food systems, including fish value chains and trade
- Food safety in fish products and fish processing
- Social inclusion in fish value chains

### Inclusive Access to Improved Inputs

- Fish health and aquaculture biosecurity
- Improved fish feed, including fish meal and fish oil replacement
- Improved fish seed through enhanced fish genetics and selective breeding



## CROSS-CUTTING THEMES

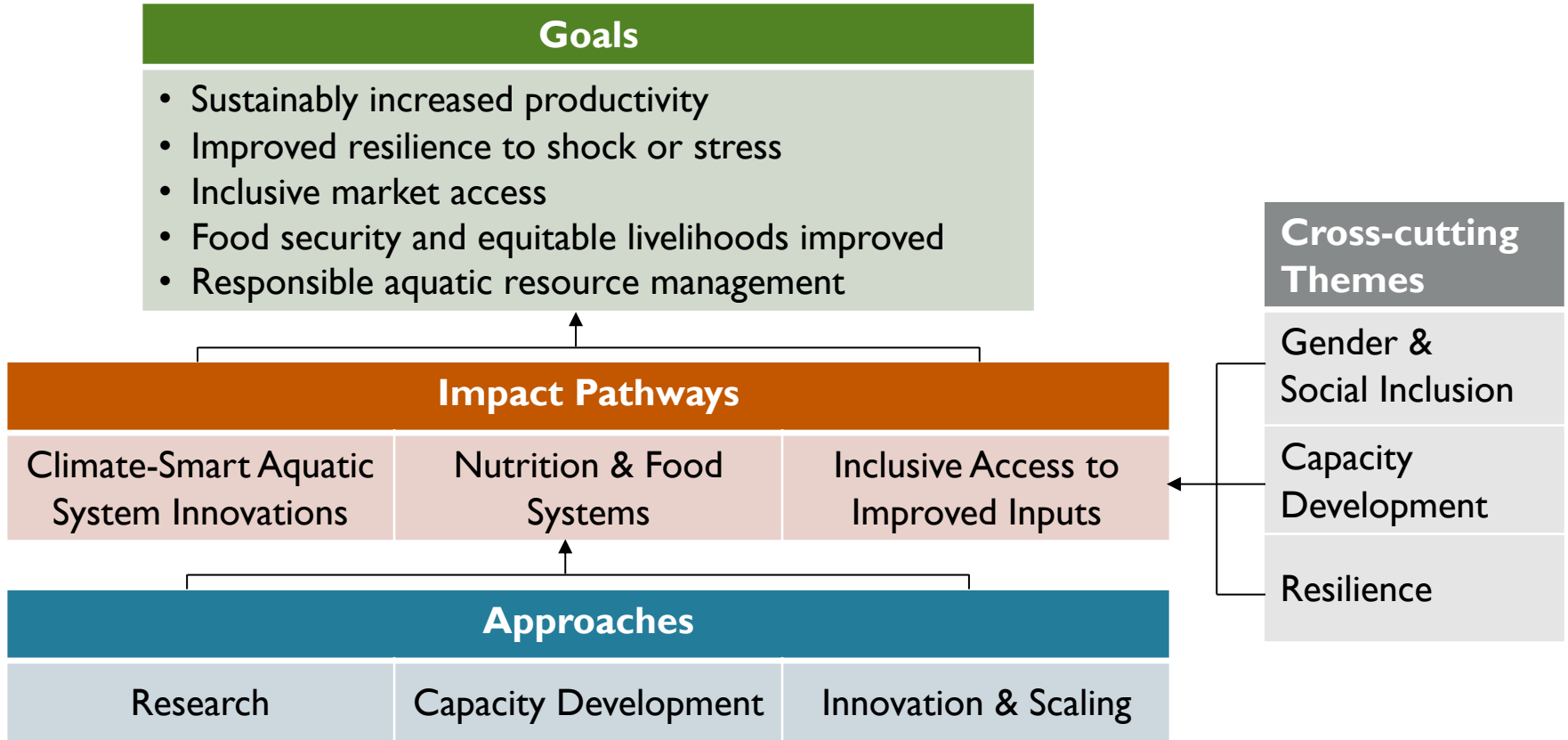
- All themes are incorporated into each funded research activity to enhance the development impact of our research.
- Experts in each theme are part of our team and review all activities and awards to ensure the theme's inclusion.
- Activities include specific indicators for each theme.







## SIMPLIFIED THEORY OF CHANGE

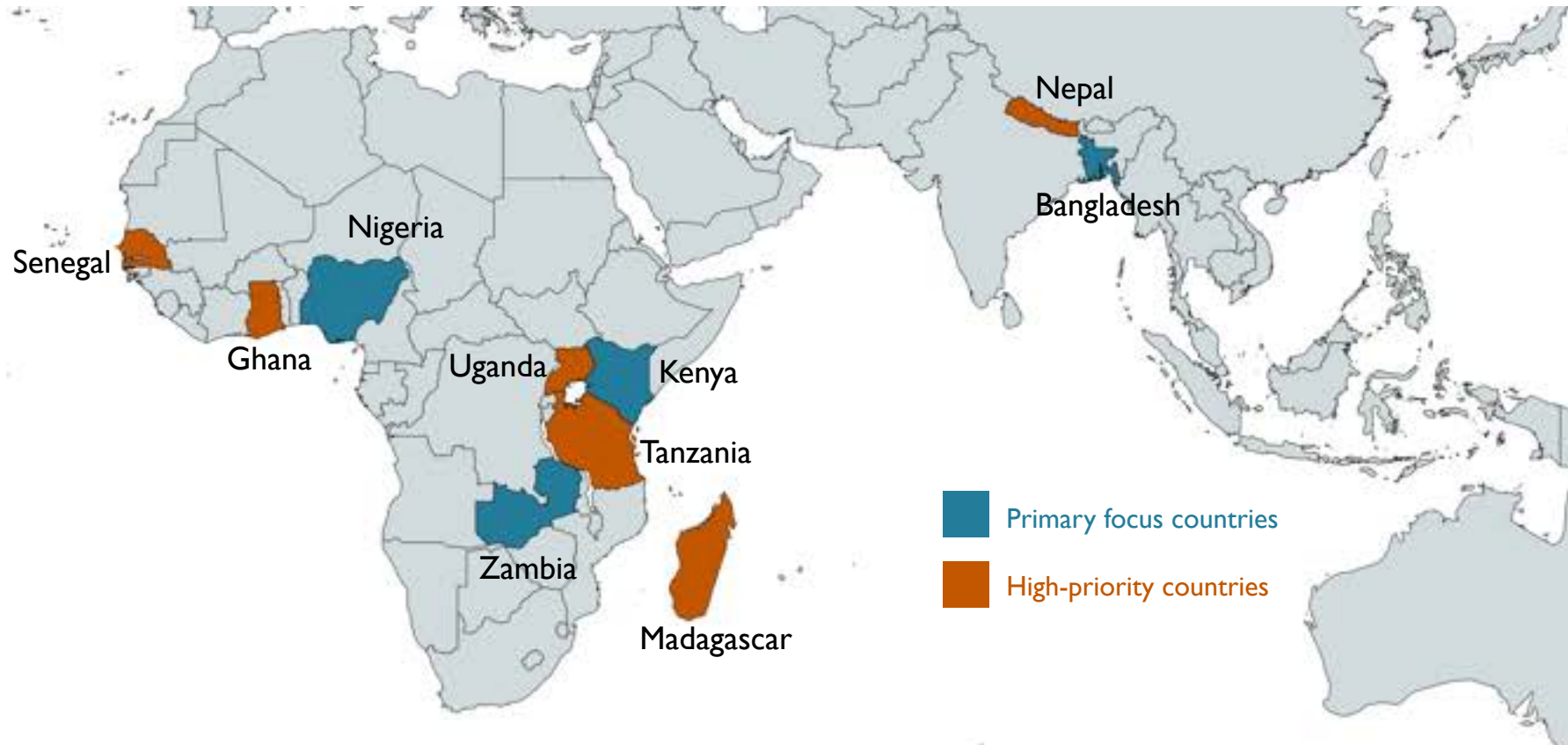




# FEED THE FUTURE

The U.S. Government's Global Hunger & Food Security Initiative

## PHASE 2 COUNTRIES



**USAID**  
FROM THE AMERICAN PEOPLE



**MISSISSIPPI STATE UNIVERSITY™**  
GLOBAL CENTER FOR AQUATIC  
HEALTH AND FOOD SECURITY



# WORKING WITH USAID

Photo: Joe Steensma





# FEED THE FUTURE

The U.S. Government's Global Hunger & Food Security Initiative

## WORKING WITH USAID



*Photo: Jérôme Delamare-Deboutteville*

- Research for development
  - NOT just development work
  - NOT basic research
  - MUST be applied and end-user focused
  - MUST result in adoption of new technologies or improved practices



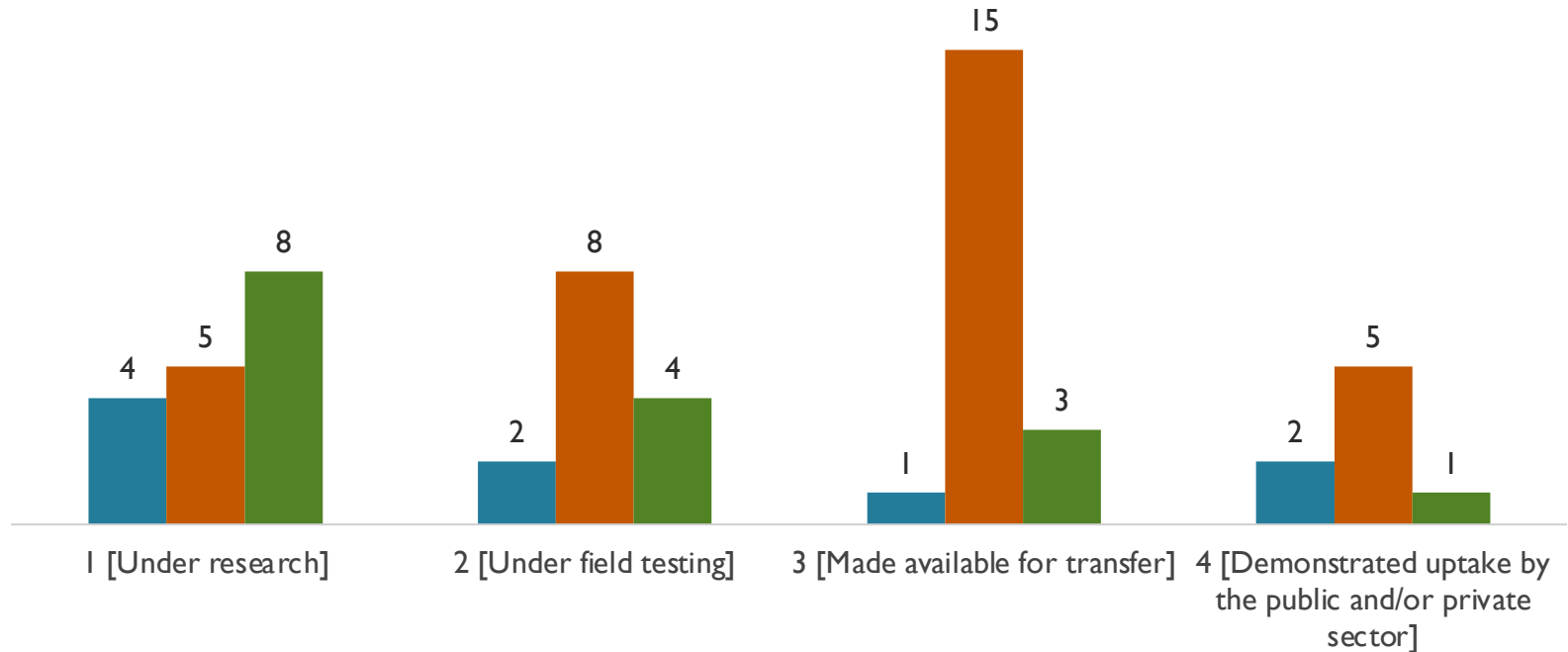
**MISSISSIPPI STATE UNIVERSITY™**  
GLOBAL CENTER FOR AQUATIC  
HEALTH AND FOOD SECURITY



## PHASE I TECHNOLOGIES

### Innovations Developed by Research Activities

■ Plant and Animal Improvement Research   ■ Production Systems Research   ■ Social Science Research





## WORKING WITH USAID



Photo: Samuel Bioh

- Level of reporting
  - Quarterly reporting to ME
  - USAID-required semi-annual reporting
  - Programmatic, financial, and MEL indicator reporting





## MEL INDICATOR REPORTING: PHASE I

Indicator	Male	Female	Total
# Participants in short-term agricultural sector productivity or food security trainings	1,276	891	2,167
# Participants in USG food security programs	2,151	2,030	4,181
# Individuals who have applied technologies or practices	1,013	465	1,748*
# Individuals who participated in USG supported long-term trainings	24	18	37

\*Sex-disaggregated data unavailable for 270 individuals



## WORKING WITH USAID



Photo: M. Gulam Hussain

- Management Entity
  - Interface between projects and USAID
  - Selects and manages projects
  - Collects data and reports to USAID
- Meetings
  - Quarterly virtual meetings
  - Annual meetings
  - One regional meeting





## WORKING WITH USAID



Photo: Monica Pasqualino

- Integrated projects
  - Must include host country institution
  - Must incorporate capacity development
  - Must include gender and social inclusion approaches and consider strategies to strengthen resilience





## PHASE I APPROACHES

### Community-based participatory research

Rice farmers in Nigeria implemented integrated aquaculture/agriculture systems and collected data at three rice-fish demonstration sites in Kebbi and Ebonyi states to achieve community buy-in on the importance of diversification to improve nutritional outputs, income resilience, and environmental sustainability.



Photo: Yaha Abubakar







## PHASE I APPROACHES

### Stakeholder engagement through ME-initiated and research activity-specific workshops

Researchers in Bangladesh worked with fish hatchery owners, nursery producers, and growers to provide training on cryopreservation technology for improved fish breeding and seed production.



*Photo: Mohammed Jahangir Alam*





## PHASE I APPROACHES

**Capacity development with host-country universities, farmer cooperatives, and community fisheries organizations**

A Citizen Science program in Cambodia supported 15 fishers from four villages along the Sre Ambel River to complete 18 months of data collection supporting sustainable fisheries management.



Photo: Phun Thorn





## PHASE I APPROACHES

### Long-term individual capacity development (degrees and certificates)

Analysis was conducted in Nigeria to understand the epidemiology and health economics of catfish and tilapia aquaculture, which resulted in the training of two Masters in Veterinary Public Health students at the University of Ibadan.





## PHASE I APPROACHES

### Collaboration with government stakeholders

Researchers in Bangladesh worked with staff in the Department of Fisheries and the National Food Safety Laboratory to strengthen capacity for rapid testing of fish samples, and results were shared with the Bangladesh Food Safety Authority to inform government policies.



Photo: Md. Khorshed Alam







# OPPORTUNITIES FOR ENGAGEMENT

Photo: Som Sitha



## MSI OPPORTUNITIES

- Principal Investigator (PI) at U.S.-based lead institution
  - Lead PI = lead institution
- Co-PI working with another U.S. PI and host country PI
  - Lead institution can be in the U.S. or in the host country



*Photo: Stephen Reichley*







# FEED THE FUTURE

The U.S. Government's Global Hunger & Food Security Initiative

## NO MSI COST-SHARING REQUIRED

- Local investment
- Strategy for hand-off



Photo: Som Sitha



**USAID**  
FROM THE AMERICAN PEOPLE



**MISSISSIPPI STATE UNIVERSITY™**  
GLOBAL CENTER FOR AQUATIC  
HEALTH AND FOOD SECURITY



# ELIGIBILITY CRITERIA

Qualified research, educational, governmental, private sector, or nonprofit institution globally that has a Unique Entity ID and is registered in the System for Award Management (SAM; [www.sam.gov/portal/SAM](http://www.sam.gov/portal/SAM))

Have ONE primary institution that will be responsible for implementing the activity, monitoring progress, ensuring compliance with MSU and USAID rules and guidelines, managing funds appropriately, collating and presenting results, and submitting progress and final reports

Have a host-country primary institution (university or other qualified organization) that will coordinate all activities in the host country—including execution of appropriate agreements—with collaborating local partner(s) if any







## PRIMARY INSTITUTION RESPONSIBILITIES

### Pre-Award

Submit one concept note

If invited, submit one full proposal

Actively participate in co-creation

### Post-Award

Lead the implementation of the activity

Ensure incorporation of cross-cutting themes

Submit data and reports on time





## REPORTING RESPONSIBILITIES

Quarterly

Semiannual

Annual

Final

Responses to questions on reporting





## RESOURCES

The following resources are/will be available on the "Current Opportunities" page of the Fish Innovation Lab website:

1. Key dates and timeline table
2. Concept note template
3. Budget template
4. MSI Engagement Webinar Recording and Slides
5. Q&A submission and response opportunity



Photo: M. Gulam Hussain





# FEED THE FUTURE

The U.S. Government's Global Hunger & Food Security Initiative

## RFA TIMELINE: IMPORTANT DATES

RFA release date	April 15, 2024
Deadline for submission of written questions	April 24, 2024
Posting of responses to written questions	May 3, 2024
Deadline for submission of concept notes	May 15, 2024
Invitations for full proposals	June 5, 2024
Informational webinar for invited full proposal teams	June 12, 2024
Deadline for submission of invited full proposals	July 24, 2024



**USAID**  
FROM THE AMERICAN PEOPLE



**MISSISSIPPI STATE UNIVERSITY™**  
GLOBAL CENTER FOR AQUATIC  
HEALTH AND FOOD SECURITY



## CONCEPT NOTE TEMPLATE

### COVER PAGE

#### HEADER

*Feed the Future Innovation Lab for Fish: RFA Concept Note*

*Email: fishlab@gcahfs.msstate.edu*

#### DESCRIPTIVE ACTIVITY TITLE

*Relevant project title depicting key project details*

#### DURATION OF ACTIVITY (PROJECT PERIOD)

*Activity period within time period described in the RFA*

#### TOTAL BUDGET REQUESTED

*Cost-sharing is not required*

#### FISH INNOVATION LAB RELEVANT AREA(S) OF INQUIRY (AI)

*Example: AI-3 Inclusive Access to Improved Inputs*





## CONCEPT NOTE TEMPLATE

### COUNTRY(IES) OF INTEREST

### NAME AND CONTACT INFORMATION

### KEY PERSONNEL

*Lead PI Name, Credentials, Title, Place of Work, \*clear distinction if U.S. or host country team,\* Email*

*Co-PI Name, Credentials, Title, Place of Work, \*clear distinction if U.S. or host country team,\* Email*

*Key Personnel Name, Credentials, Title, Place of Work, \*clear distinction if U.S. or host country team,\* Email*

### MINORITY-SERVING INSTITUTION (MSI) ENGAGEMENT

*If yes, include Name, Credentials, Title, Place of Work, Email*

*Institution Name, location, and type of MSI*

*If no, indicate N/A*







**FEED THE FUTURE**

The U.S. Government's Global Hunger & Food Security Initiative

# CONCEPT NOTE TEMPLATE

**PROBLEM STATEMENT**

**ACTIVITY GOALS**

**APPROACH**

**PROJECTED OUTPUTS**

**PROJECTED OUTCOMES**



**USAID**  
FROM THE AMERICAN PEOPLE



**MISSISSIPPI STATE UNIVERSITY™**  
GLOBAL CENTER FOR AQUATIC  
HEALTH AND FOOD SECURITY



## CONCEPT NOTE TEMPLATE

### RELEVANCE TO RFA COMPONENTS

*Includes but is not limited to:*

*Fish Innovation Lab Theory of Change*

*U.S. Government Global Food Security Research Strategy*

*Cross-cutting theme alignment*

*Feed the Future Country Plan relevance*

*Priority country*

*Zone of Influence (ZOI)*





**FEED THE FUTURE**

The U.S. Government's Global Hunger & Food Security Initiative

# CONCEPT NOTE TEMPLATE

**RESEARCH APPROACH AND METHODS**

**DEVELOPMENT IMPACTS**

**PROJECT PRIORITY GROUPS**

**ACTIVITY TIMELINE (CHART PREFERRED) (integrated)**

**REFERENCES**

**BUDGET NARRATIVE**

**KEY PERSONNEL CVs**



**USAID**  
FROM THE AMERICAN PEOPLE



**MISSISSIPPI STATE UNIVERSITY™**  
GLOBAL CENTER FOR AQUATIC  
HEALTH AND FOOD SECURITY



# FEED THE FUTURE

The U.S. Government's Global Hunger & Food Security Initiative

## CONTACT



Newsletter Sign Up

[fishinnovationlab.msstate.edu](http://fishinnovationlab.msstate.edu)

[fishlab@gcahfs.msstate.edu](mailto:fishlab@gcahfs.msstate.edu)

+1 662.325.1057

**Follow us on:**

X/Twitter: [@FishInnovation](https://twitter.com/FishInnovation)

Facebook: [@FishInnovation](https://facebook.com/FishInnovation)

## DIRECTOR DEPUTY DIRECTOR



**Mark Lawrence**



**Stephen Reichley**

## MANAGING PARTNERS

**Mississippi State University (Lead)  
Global Center for Aquatic Health and Food Security**

Blue Aquaculture Consulting  
Pwani University  
Texas State University

University of Rhode Island  
Washington University in St. Louis  
WorldFish



**USAID**  
FROM THE AMERICAN PEOPLE



**MISSISSIPPI STATE UNIVERSITY™**  
GLOBAL CENTER FOR AQUATIC  
HEALTH AND FOOD SECURITY



# FEED THE FUTURE

The U.S. Government's Global Hunger & Food Security Initiative

## CONTACT



Current Opportunities Webpage

[fishinnovationlab.msstate.edu](http://fishinnovationlab.msstate.edu)

[fishlab@gcahfs.msstate.edu](mailto:fishlab@gcahfs.msstate.edu)

+1 662.325.1057

**Follow us on:**

X/Twitter: [@FishInnovation](https://twitter.com/FishInnovation)

Facebook: [@FishInnovation](https://facebook.com/FishInnovation)

## RFA TIMELINE: IMPORTANT DATES

RFA release date	April 15, 2024
Deadline for submission of written questions	April 24, 2024
Posting of responses to written questions	May 3, 2024
Deadline for submission of concept notes	May 15, 2024
Invitations for full proposals	June 5, 2024
Informational webinar for invited full proposals	June 12, 2024
Deadline for submission of invited full proposals	July 24, 2024



**USAID**  
FROM THE AMERICAN PEOPLE



**MISSISSIPPI STATE UNIVERSITY™**  
GLOBAL CENTER FOR AQUATIC  
HEALTH AND FOOD SECURITY





# FEED THE FUTURE

The U.S. Government's Global Hunger & Food Security Initiative

[www.feedthefuture.gov](http://www.feedthefuture.gov)



**MISSISSIPPI STATE UNIVERSITY™**  
GLOBAL CENTER FOR AQUATIC  
HEALTH AND FOOD SECURITY